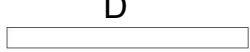





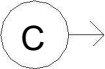


LOW VOLTAGE SYSTEMS SYMBOL LEGEND


SYMBOL:	DESCRIPTION:	BACKBOX:	CONDUITS:	MOUNTING HEIGHT:	ELECTRONICS:	TELECOM CABLE REQUIREMENTS:	POWER REQUIREMENTS:
	FLAT PANEL DISPLAY	PWB-100	ONE (1) 1-1/4" EC	60" AFF	FLAT PANEL DISPLAY	N/A	120VAC DUPLEX RECEPTACLE
	WALL MOUNTED VIDEO CAMERA	2-GANG BOX	N/A	60" AFF	VIDEO CAMERA	N/A	REMOTE LOW VOLTAGE POWER
	5-GANG MULTI-MEDIA WALLBOX	5-GANG BOX	THREE (3) 1-1/4" EC	OUTLET HEIGHT	N/A	N/A	N/A
	FUTURE AUDIOVISUAL EQUIPMENT RACK	N/A	N/A	ON FLOOR	N/A	N/A	(2) DEDICATED 20-AMP, 120V CIRCUITS W/ DUPLEX RECEPTACLE
	STANDARD TELECOMMUNICATION OUTLET	2-GANG BOX WITH SINGLE GANG TRIM RING	ONE (1) 1-1/4" EC	OUTLET HEIGHT	N/A	N/A	N/A
	WIRELESS ACCESS POINT	SURFACE MOUNTED BISCUIT BOX	N/A	CEILING MOUNTED	WIRELESS ACCESS POINT	N/A	REMOTE LOW VOLTAGE POWER
	FIXED SURVEILLANCE VIDEO CAMERA	SURFACE MOUNTED BISCUIT BOX	N/A	CEILING MOUNTED	FIXED VIDEO CAMERA	N/A	REMOTE LOW VOLTAGE POWER

LOW VOLTAGE SYSTEM SHEET LIST

Sheet Number	Sheet Name
TA-001	LOW VOLTAGE SYSTEMS TITLESHEET
TA-100	LOW VOLTAGE OVERALL 6TH FLOOR PLAN
TA-101	6TH FLOOR - APT. SIM LAB
TA-102	6TH FLOOR - APT. SIM LAB - REFLECTED CEILING PLAN
TA-500	LOW VOLTAGE SYSTEMS INFRASTRUCTURE DETAILS

TA SERIES SHEET NOTES


- ALL CONDUIT, BACK BOXES, AND AC POWER REQUIREMENTS SHALL BE PROVIDED BY THE ELECTRICAL CONTRACTOR.
- ANY CONDUIT TERMINATIONS AT CONSOLE OR EQUIPMENT RACK LOCATIONS SHOULD BE ACCESSIBLE.
- EACH LOW VOLTAGE OUTLET SHALL INCLUDE A 200lb TEST PULL WIRE TO ACCESSIBLE AFC OR CABLE TRAY UNLESS OTHERWISE NOTED.
- REFERENCE ELECTRICAL DIVISION 26 00 00 SPECIFICATION FOR CONDUIT SPECIFICATIONS.
- COORDINATE CEILING MOUNTED ELEMENTS WITH ARCHITECTURAL CEILING PLANS.
- REFERENCE ARCHITECTURAL DRAWINGS FOR ALL BOX LOCATIONS AND DIMENSIONS.
- ALL TELECOM CONDUITS ARE TO RUN FROM BACK BOX TO ACCESSIBLE AFC UNLESS DETAILED OTHERWISE.
- NOTES ON INDIVIDUAL DRAWING SHEETS SUPERSEDE THE ABOVE REQUIREMENTS.



UNIVERSITY of MARYLAND
BALTIMORE

ADMINISTRATION & FINANCE
DESIGN AND CONSTRUCTION

OFFICE OF FACILITIES MANAGEMENT
630 W. LEXINGTON STREET, 6TH FLOOR
BALTIMORE, MARYLAND 21201
PHONE NO. (410) 706-7710
FAX NO. (410) 706-8517



PROFESSIONAL CERTIFICATION, I HEREBY CERTIFY THAT THESE DOCUMENTS WERE PREPARED OR APPROVED BY ME, AND THAT I AM A DULY LICENSED PROFESSIONAL ENGINEER UNDER THE LAWS OF THE STATE OF MARYLAND.
LICENSE No. _____ EXPIRATION DATE: _____

REGISTRATION/STAMP

PROJECT TITLE :

UMB SON
6TH FLOOR
APT. SIM.
RENOVATION

UMB BUILDING NO. : SON - 0833

UMB Project NO. : 26-312

A/E PROJECT NO. : 25-128

CAD FILE NO. :

DATE :

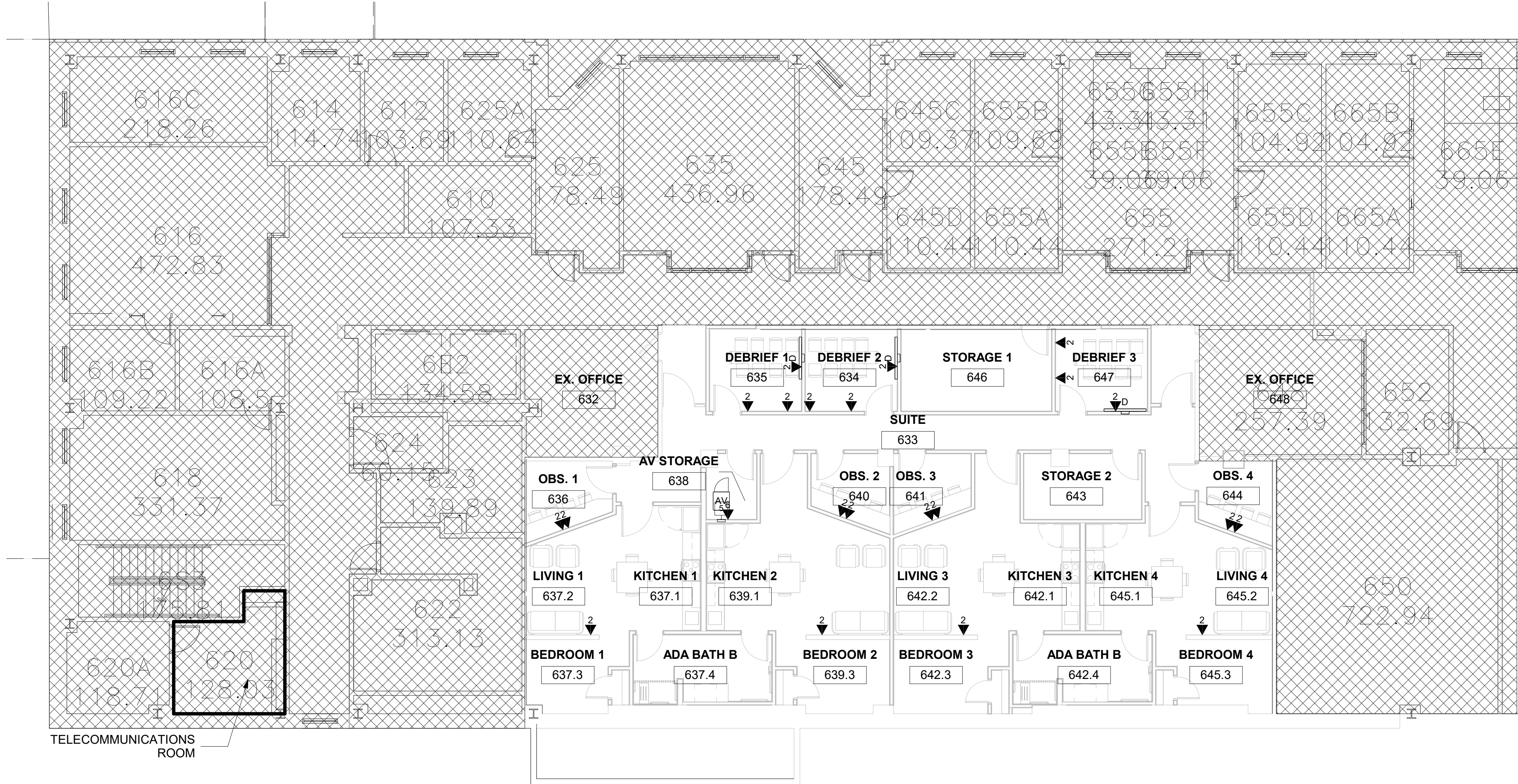
SHEET TITLE :

LOW VOLTAGE
SYSTEMS
TITLESHEET

REVISIONS		
NO	DATE	ITEM
	2/07/26	100% CD SUBMISSION
	4/08/26	BID SET

SHEET NO.

TA-001



① 6TH FLOOR - OVERALL
1/8" = 1'-0"

UNIVERSITY of MARYLAND
BALTIMORE

ADMINISTRATION & FINANCE
DESIGN AND CONSTRUCTION

OFFICE OF FACILITIES MANAGEMENT
630 W. LEXINGTON STREET, 6TH FLOOR
BALTIMORE, MARYLAND 21201
PHONE NO. (410) 706-7710
FAX NO. (410) 706-8517

Murphy & Dittenhafer
ARCHITECTS

PROFESSIONAL CERTIFICATION: I HEREBY
CERTIFY THAT THESE DOCUMENTS WERE
PREPARED OR APPROVED BY ME, AND THAT I
AM A DULY LICENSED PROFESSIONAL ENGINEER
UNDER THE LAWS OF THE STATE OF MARYLAND.
LICENSE No. _____ EXPIRATION DATE: _____

REGISTRATION / STAMP

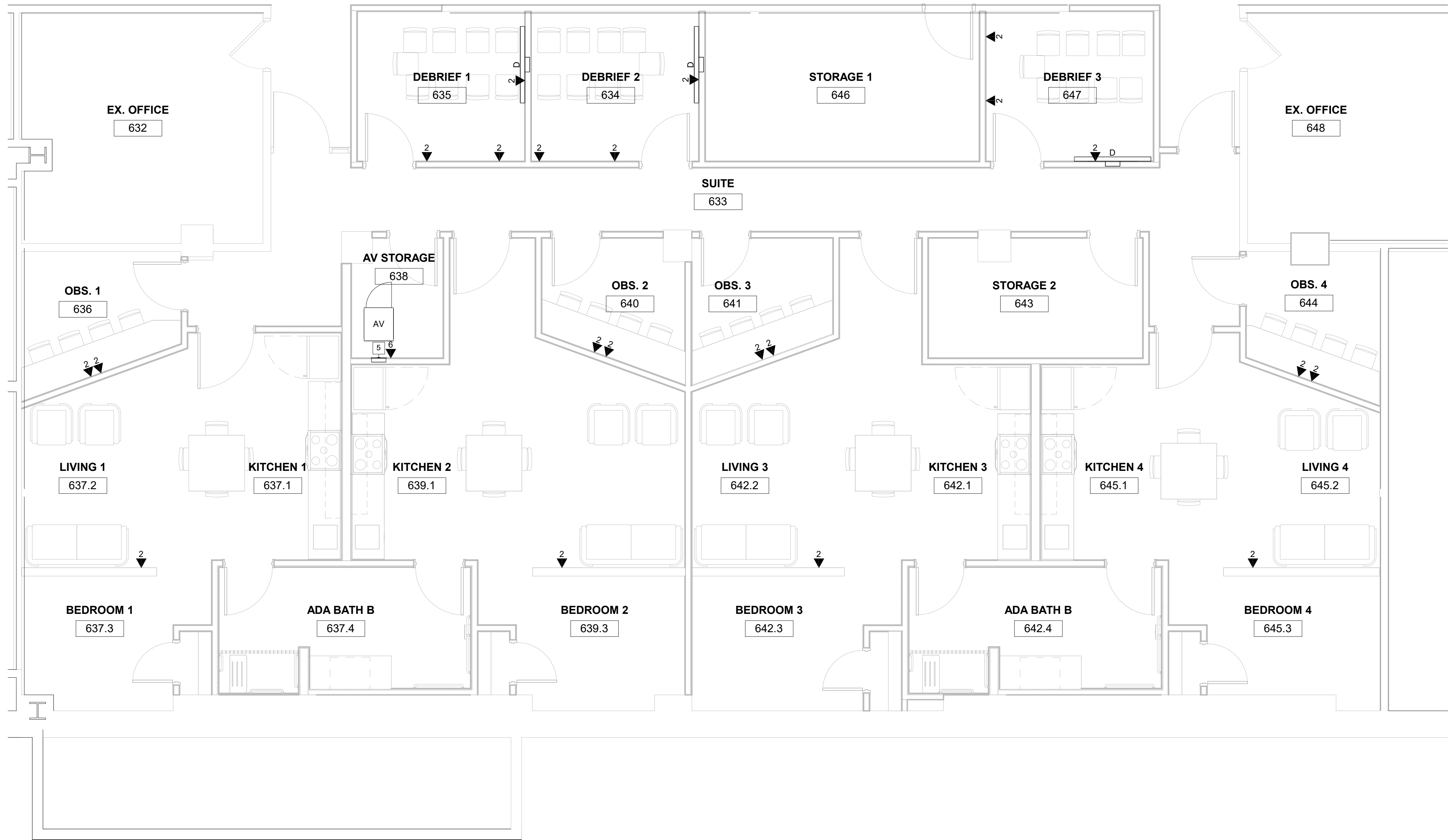
PROJECT TITLE :
**UMB SON
6TH FLOOR
APT. SIM.
RENOVATION**

UMB BUILDING NO. : SON - 0833
UMB Project NO. : 26-312
A/E PROJECT NO. : 25-128
CAD FILE NO. :
DATE :

SHEET TITLE :
**LOW VOLTAGE
OVERALL 6TH
FLOOR PLAN**

REVISIONS		
NO	DATE	ITEM
	2/07/26	100% CD SUBMISSION
	4/08/26	BID SET

SHEET NO.
TA-100



① 6TH FLOOR - APT. SIM LAB
1/4" = 1'-0"



PROFESSIONAL CERTIFICATION: I HEREBY
CERTIFY THAT THESE DOCUMENTS WERE
PREPARED OR APPROVED BY ME, AND THAT I
AM A DULY LICENSED PROFESSIONAL ENGINEER
UNDER THE LAWS OF THE STATE OF MARYLAND.
LICENSE NO. _____ EXPIRATION DATE: _____

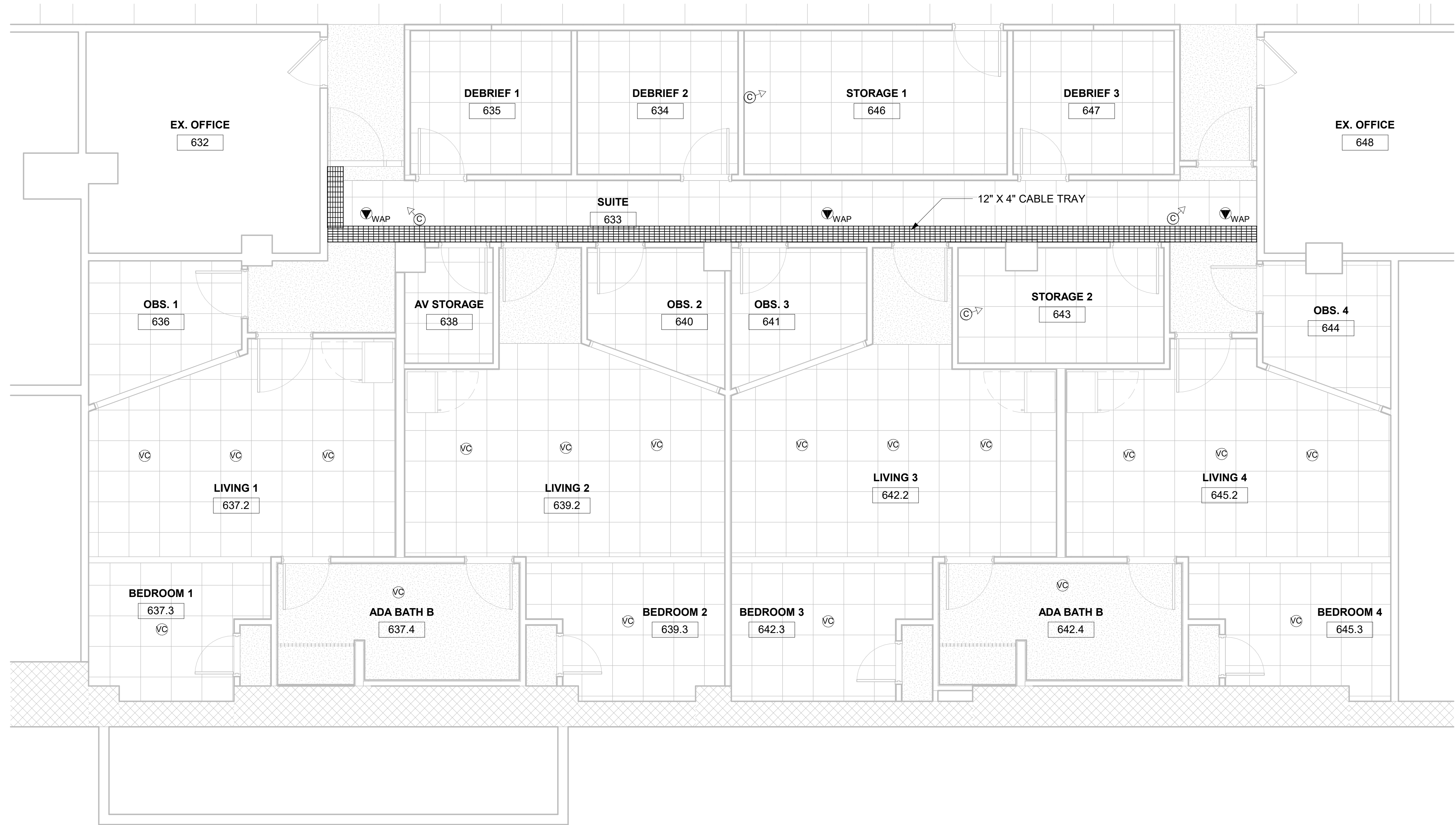
REGISTRATION/STAMP

PROJECT TITLE :
**UMB SON
6TH FLOOR
APT. SIM.
RENOVATION**

UMB BUILDING NO. :	SON - 0833
UMB Project NO. :	26-312
A/E PROJECT NO. :	25-128
CAD FILE NO. :	
DATE :	

SHEET TITLE :
**6TH FLOOR -
APT. SIM LAB**

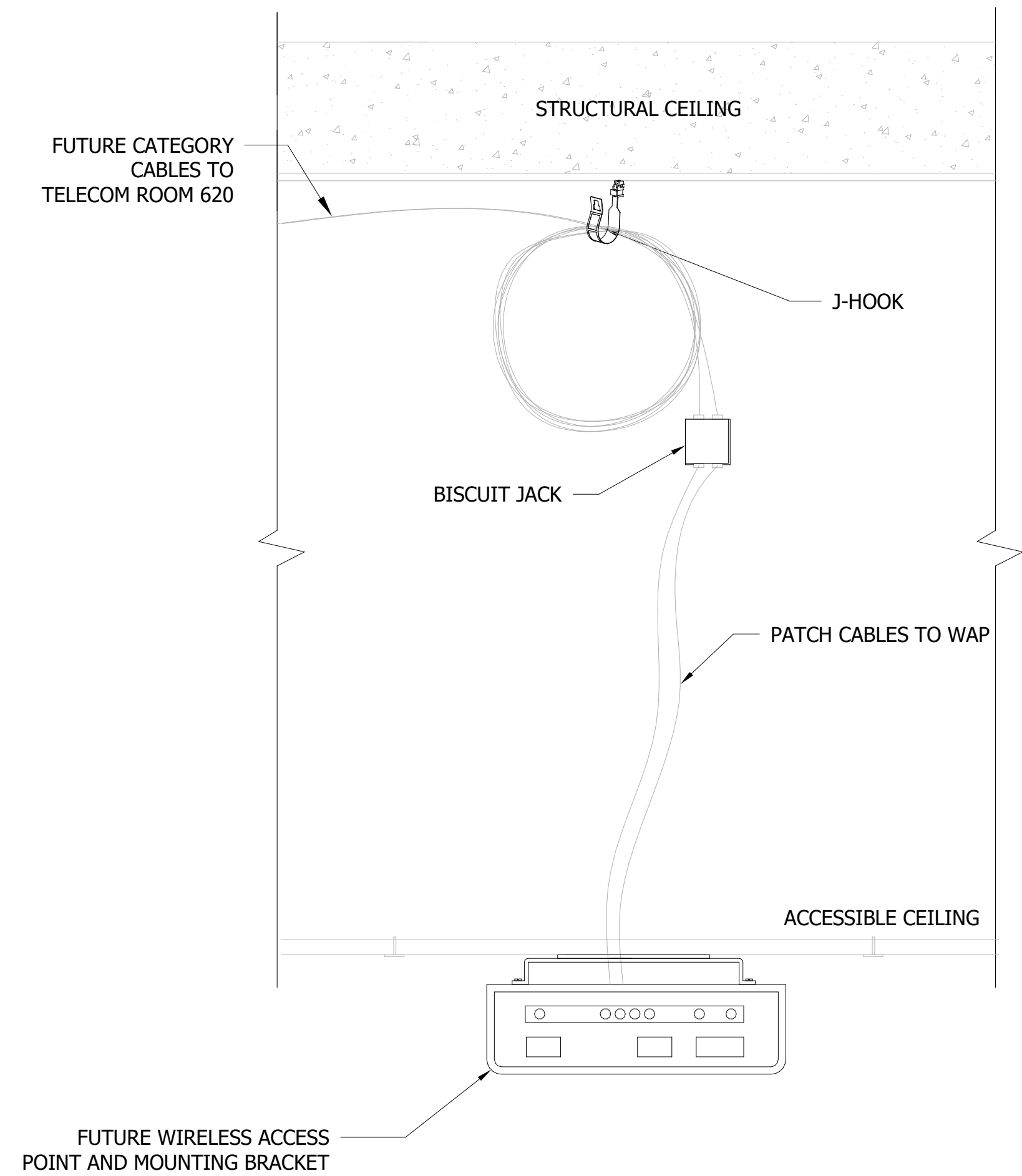
REVISIONS		
NO	DATE	ITEM
	2/07/26	100% CD SUBMISSION
	4/08/26	BID SET



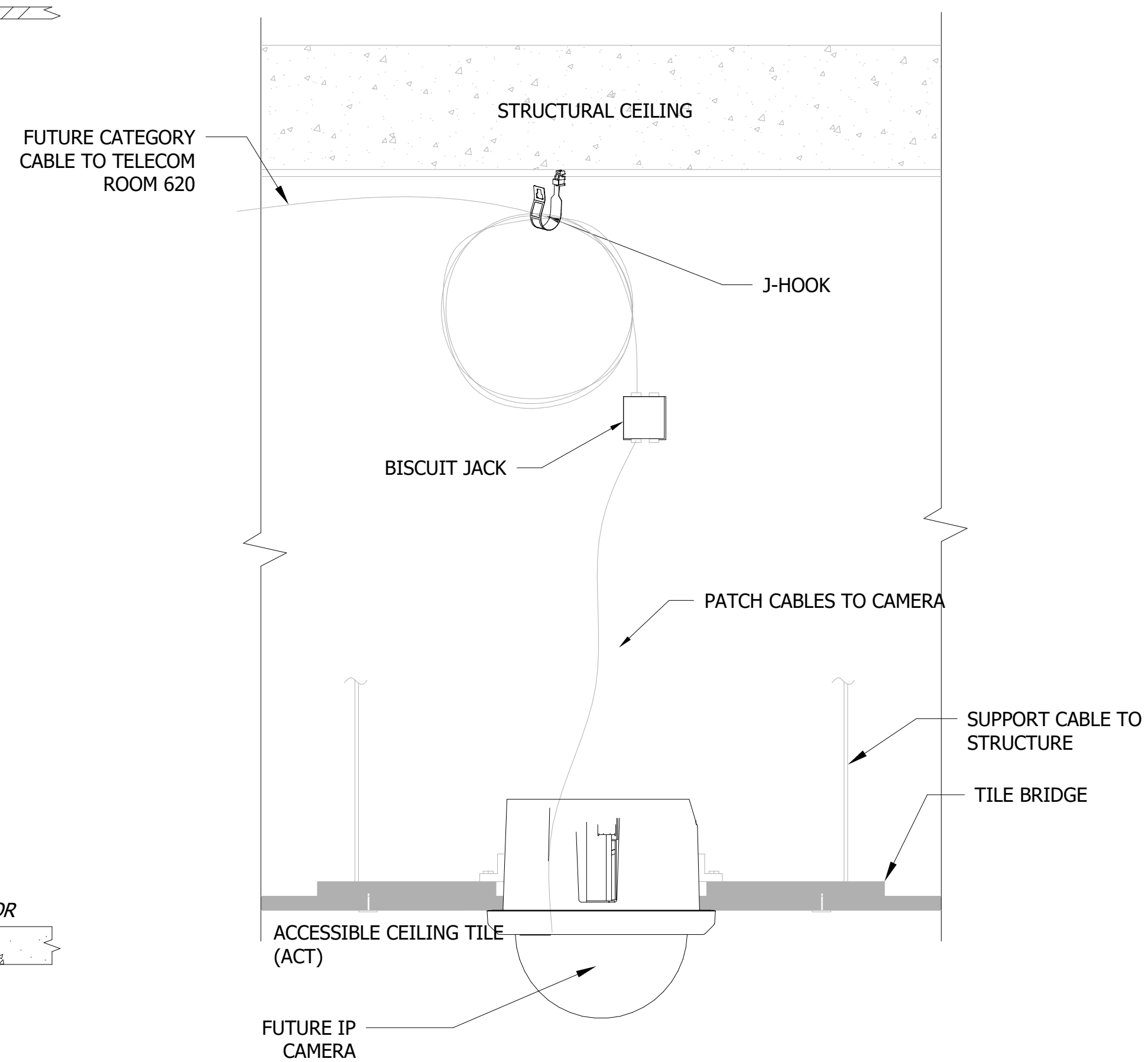
① 6TH FLOOR - APT. SIM LAB -
REFLECTED CEILING PLAN
1/4" = 1'-0"

REVISIONS		
NO	DATE	ITEM
	2/07/26	100% CD SUBMISSION
	4/08/26	BID SET

REVISIONS		
NO	DATE	ITEM
	2/07/26	100% CD SUBMISSION
	4/08/26	BID SET

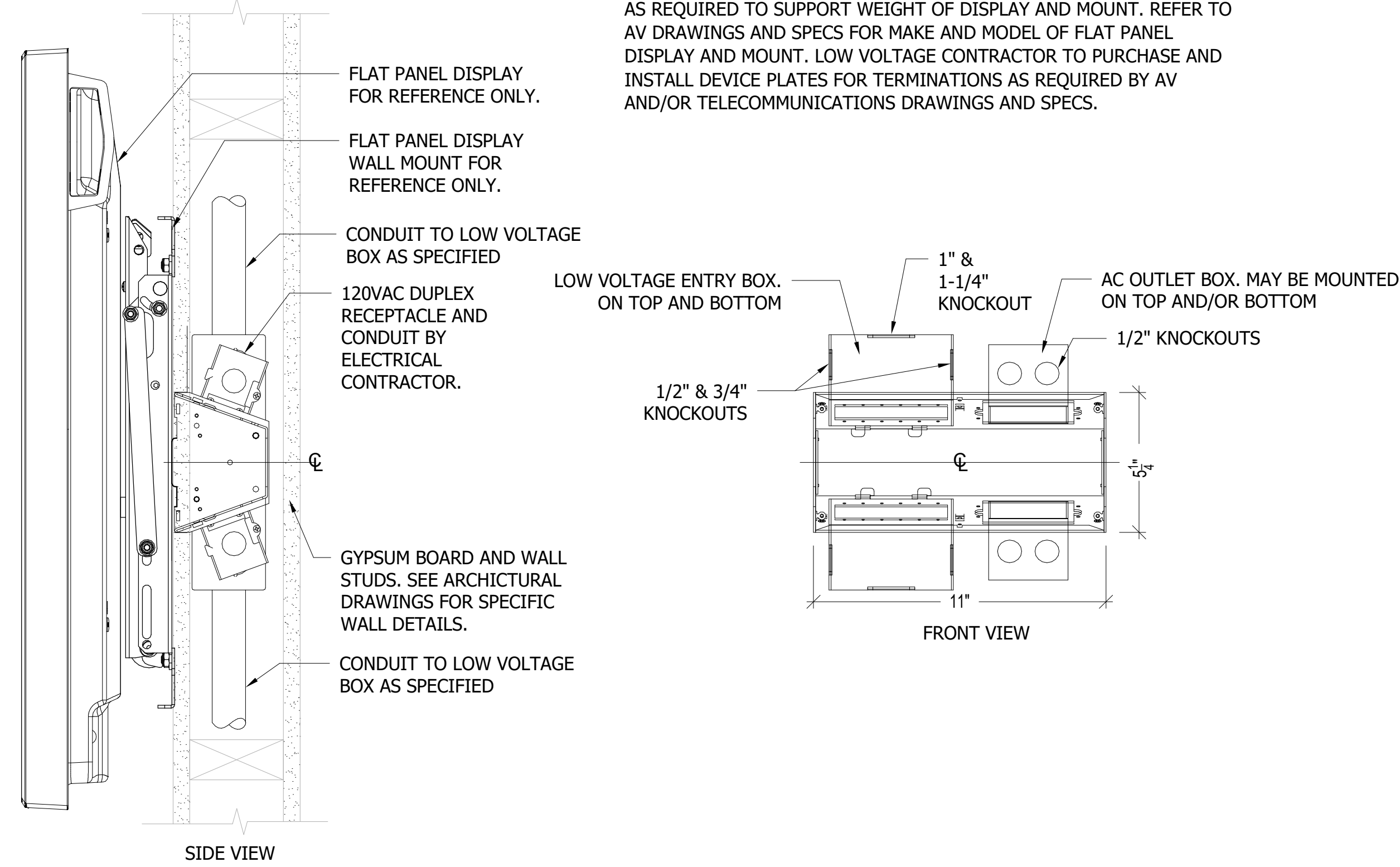


2 WAP IN ACCESSIBLE CEILING TILE
INFRASTRUCTURE DETAIL
3" = 1'-0"

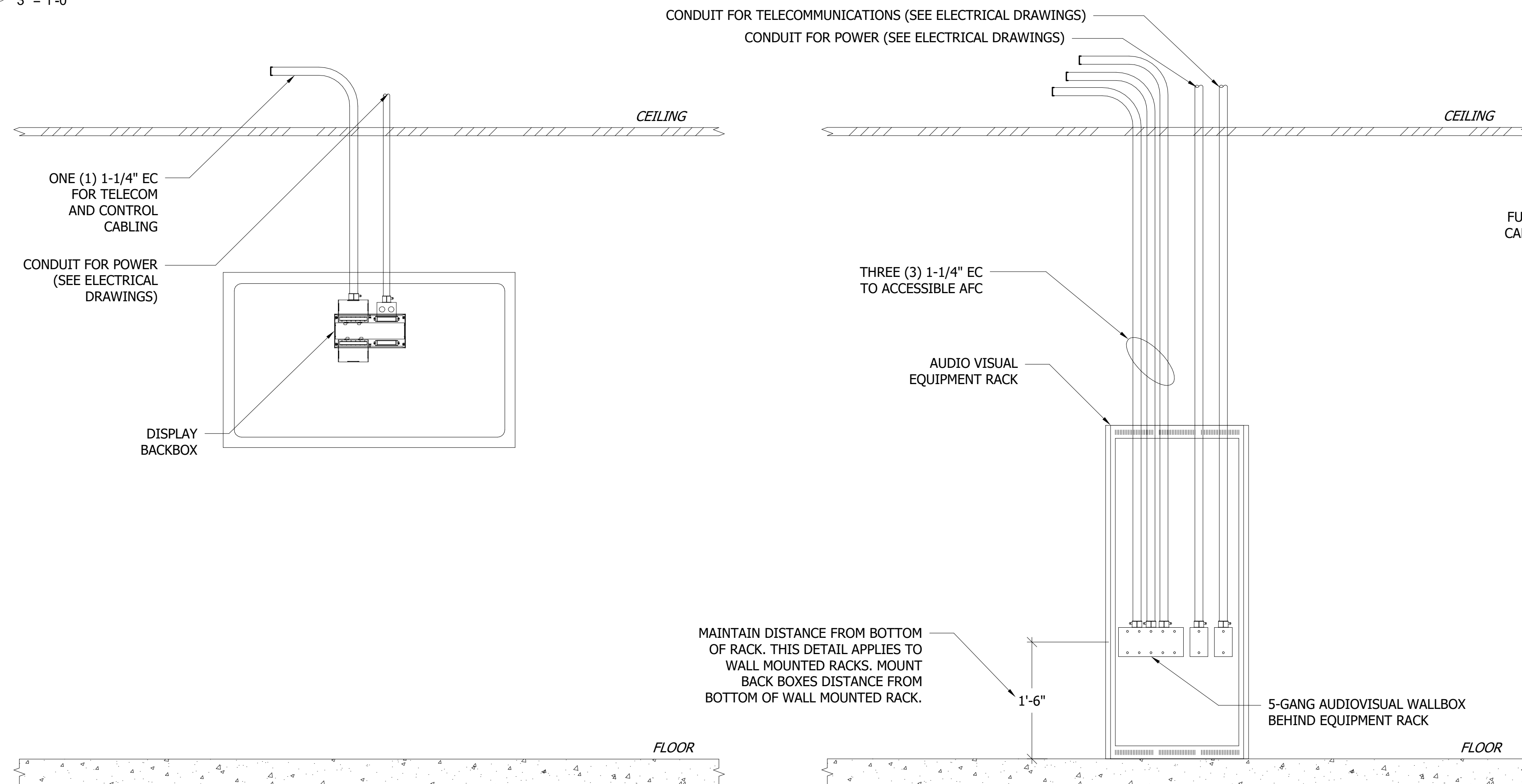


5 CAMERA IN ACCESSIBLE CEILING TILE
INFRASTRUCTURE DETAIL
3" = 1'-0"

PWB-100 FLAT PANEL DISPLAY WALLBOX
PROVIDE ARCHITECTURAL AND/OR STRUCTURAL WALL REINFORCEMENT AS REQUIRED TO SUPPORT WEIGHT OF DISPLAY AND MOUNT. REFER TO AV DRAWINGS AND SPECS FOR MAKE AND MODEL OF FLAT PANEL DISPLAY AND MOUNT. LOW VOLTAGE CONTRACTOR TO PURCHASE AND INSTALL DEVICE PLATES FOR TERMINATIONS AS REQUIRED BY AV AND/OR TELECOMMUNICATIONS DRAWINGS AND SPECS.



1 FLAT PANEL DISPLAY
INFRASTRUCTURE DETAIL
3" = 1'-0"



3 TYPICAL DISPLAY INFRASTRUCTURE
DETAIL
1" = 1'-0"

4 TYPICAL AV EQUIPMENT RACK
INFRASTRUCTURE DETAIL
1" = 1'-0"